



The Vale health and wellbeing centre



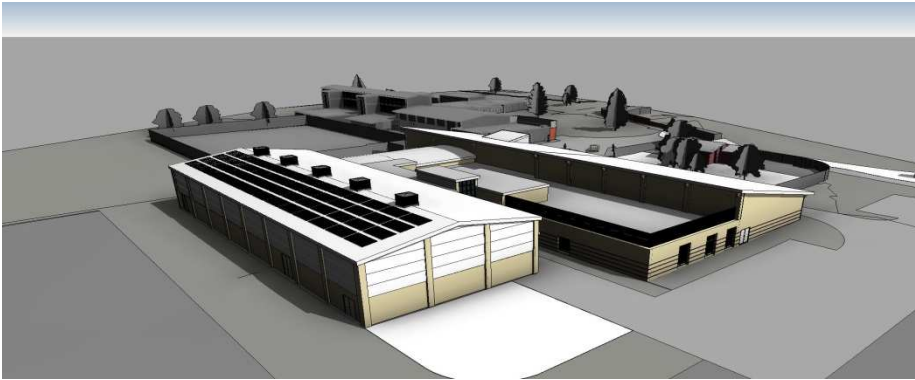
Ros Griffiths – Community Engagement Manager



Background

- Scheme revised summer 2015 to bring within budget
- COB signed off outline plan October 2015
- Area Board approved accommodation schedule November 2015
- COB disbanded 2015. Members involved as 'advisors' with individual specialisms (design / communications and marketing / wheeled sports)
- Concept Design developed
- Logo finalised
- Wheeled Sports scoping group formed
- Regular updates via CEM and OCM





Existing Leisure Centre

Wet change and Pool

Fitness suite

Dedicated youth space

Office and reception

Dry change

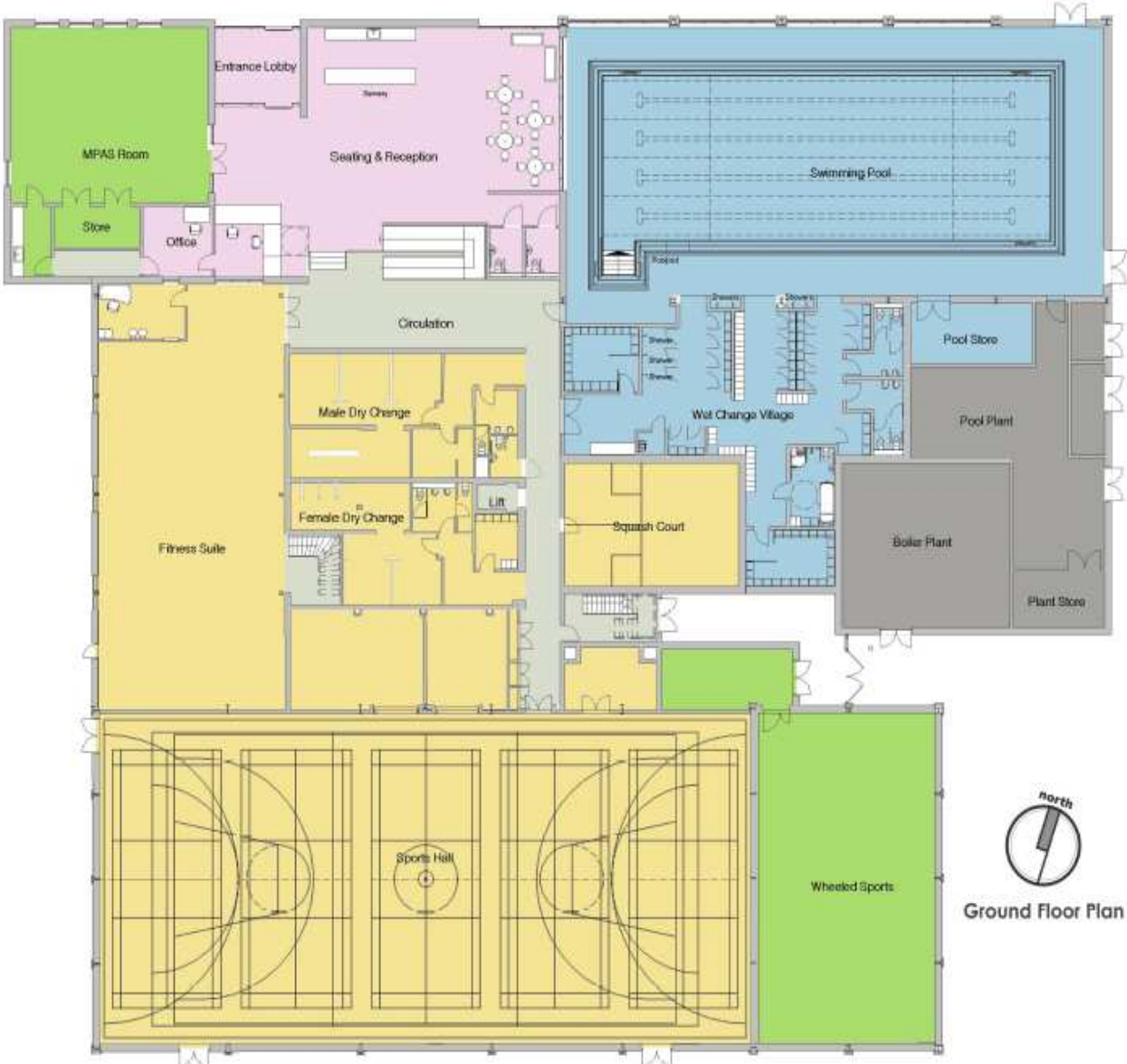
Squash courts x2

Sports hall

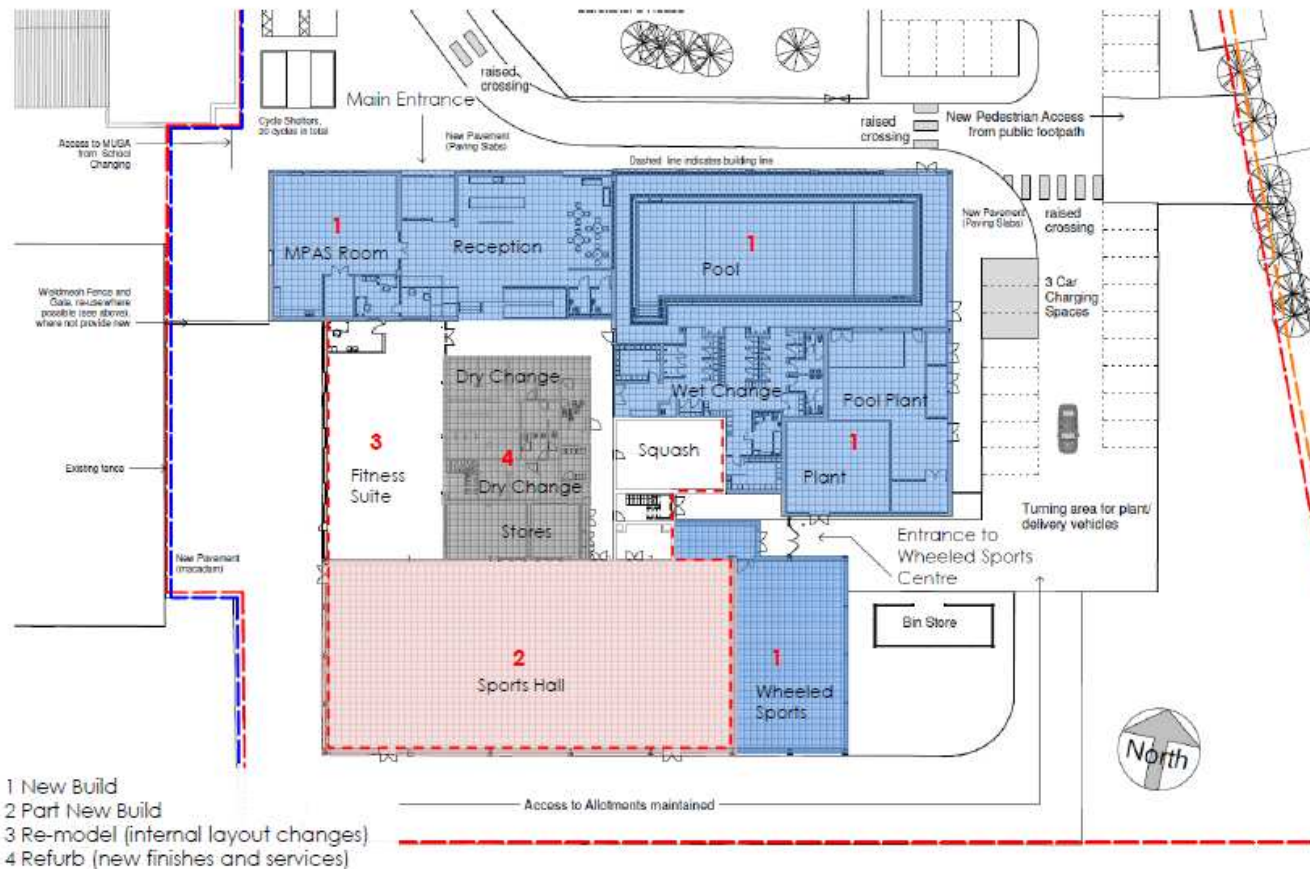


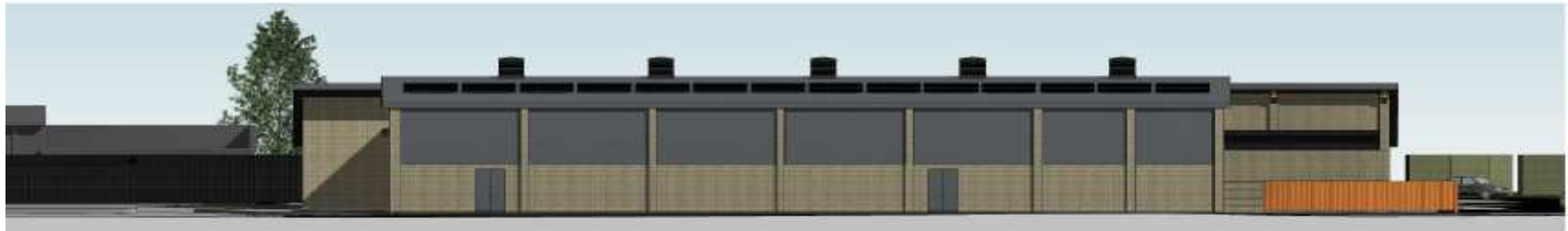
New centre

- New pool
Wet change
- MPAS
Wheeled Sports Area
- Office
Reception
Servery
Seating
- Circulation space
- Fitness suite
Dry change
Sports Hall
Squash Court

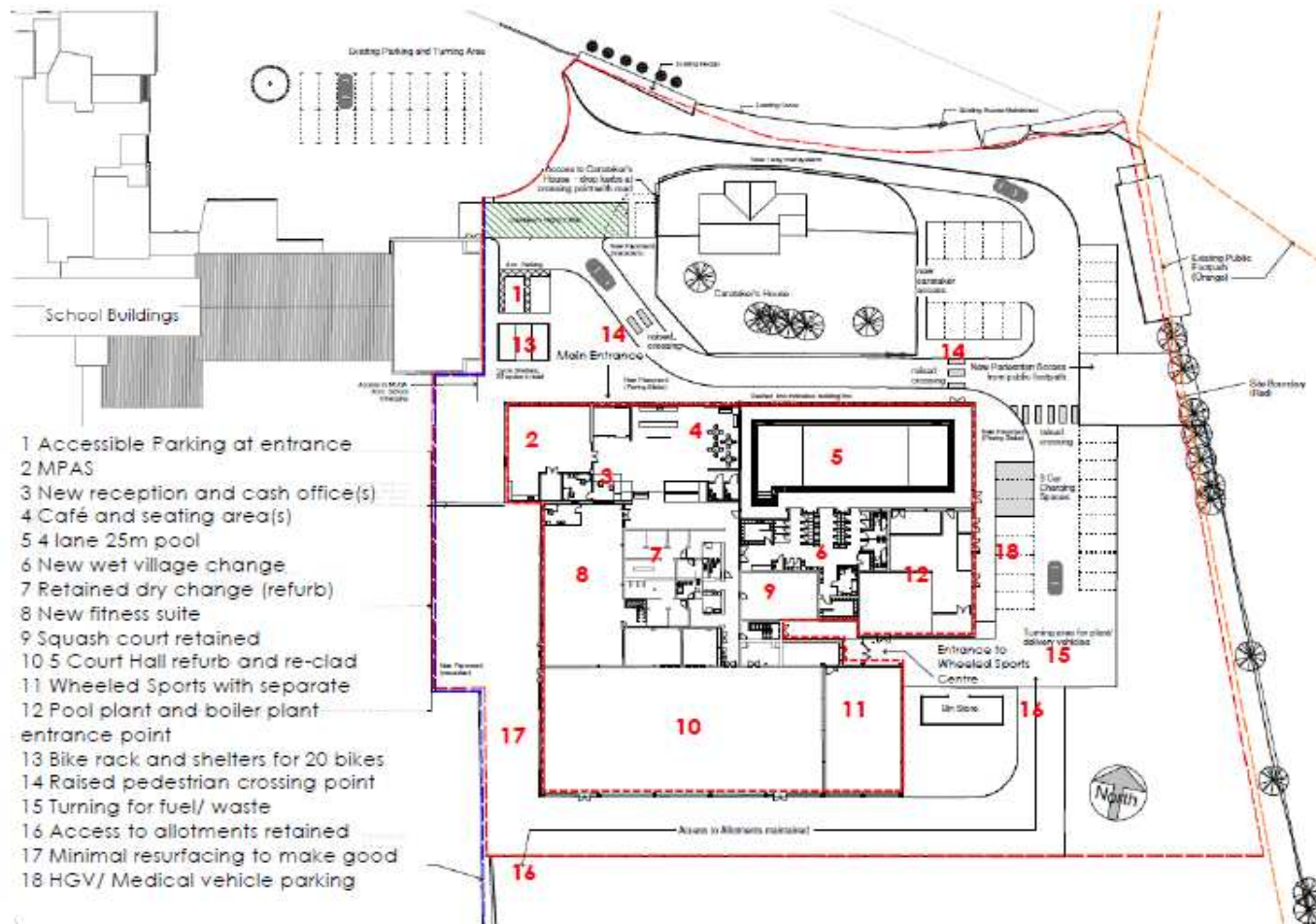


New Build, re-furbish and re-model





New site plan



Multi use Games Area MUGA

- The Multi use Games Area is already complete and offers a safe, enclosed games area.
- This is a dual use for facility for both the school and community use.
- The MUGA is available for hire for:
 - Tennis
 - Netball
- Bookings can be made at the Leisure Centre.



Catering offer

- Local business opportunity
- Servery area provided with utilities
- Additional seating
- Vending option
- Volunteer led



Wheeled Sports Area

- Separate access
- Reception room
- Parish Council section 106 money allocated for fit out
- Community management model
- Consultation event to explore design options
- Developed through LYN



wheelscape
skateparks



Library – community hub

- Meeting space
- Hot desking for staff and partners
- Develop local offer
- Increase volunteer base
- Changing places facility



Changing Places



Not included within the scheme

- No fit out for the wheeled sports facility
Section 106 money allocated
- No works to connect the centre to Pewsey Vale School or provide alterations to caretakers dwelling.
- No dedicated Police accommodation
NPT to use breakout space and office/meeting room and hot desks at Pewsey Library



Indicative Build Programme

- Proceed to Planning Spring 2016
- Detailed Design and develop tender documents Summer 2016
- Contractor Interviews Autumn 2016
- Construction Autumn / Winter 2016
- Opening early 2018



Communications and Marketing

- Develop communications plan
- Pre Planning consultation
- Test catering offer with the community
- Wheeled sports consultation event for young people
- Work with clubs and groups to access alternative facilities / stakeholder briefings
- Promote offer to wider community (residents/clubs/schools/businesses)
- Develop programme of use
- Develop social media platforms e.g. dedicated website
- Regular updates via Our Community Matters and Area Board meetings



Governance

- Area Board – Responsible for overseeing delivery and promotion of the objectives of H&WC
- Health and wellbeing centre management team established
- Reporting structure - key topics, including:

Usage / Progress against an agreed business plan / Operational changes / Financial performance against budget / Customer feedback / Major events and programming / Achievements / Progress in delivering the council's policy on volunteering and apprenticeships / Promotion, marketing and publicity



Q&A?

